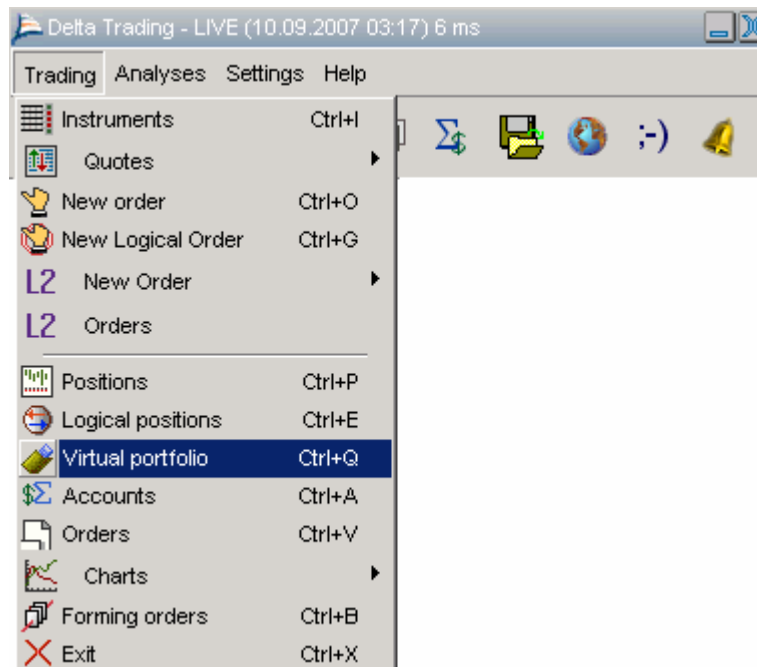


V I R T U A L P O R T F O L I O S

IN DELTA TRADING

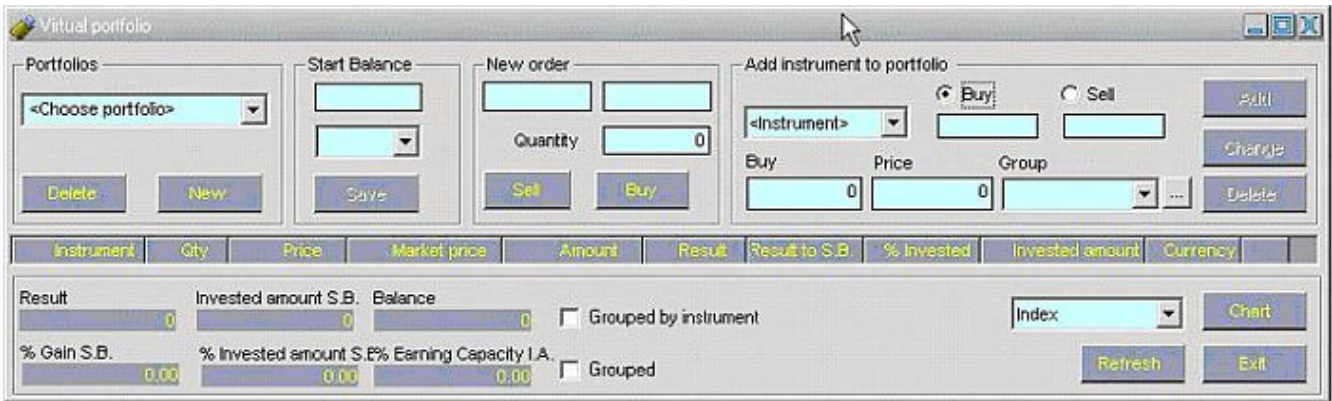
The purpose of the module “Virtual Portfolio” in Delta Trading is to help you manage more than one single account and forecast possible results as a consequence from certain strategies, without executing any real trades. If you wish to convert your Virtual Portfolio into a real one, you can easily do so by using the function “Basket order”.

Click on “Trading” and then choose “Virtual Portfolio” from the drop-down menu (Figure 1):



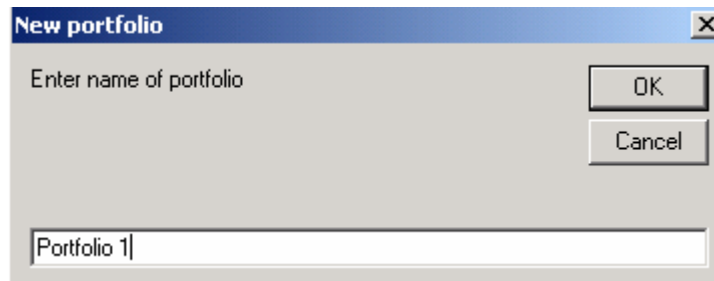
(Figure 1)

The window shown below will open (Figure 2):



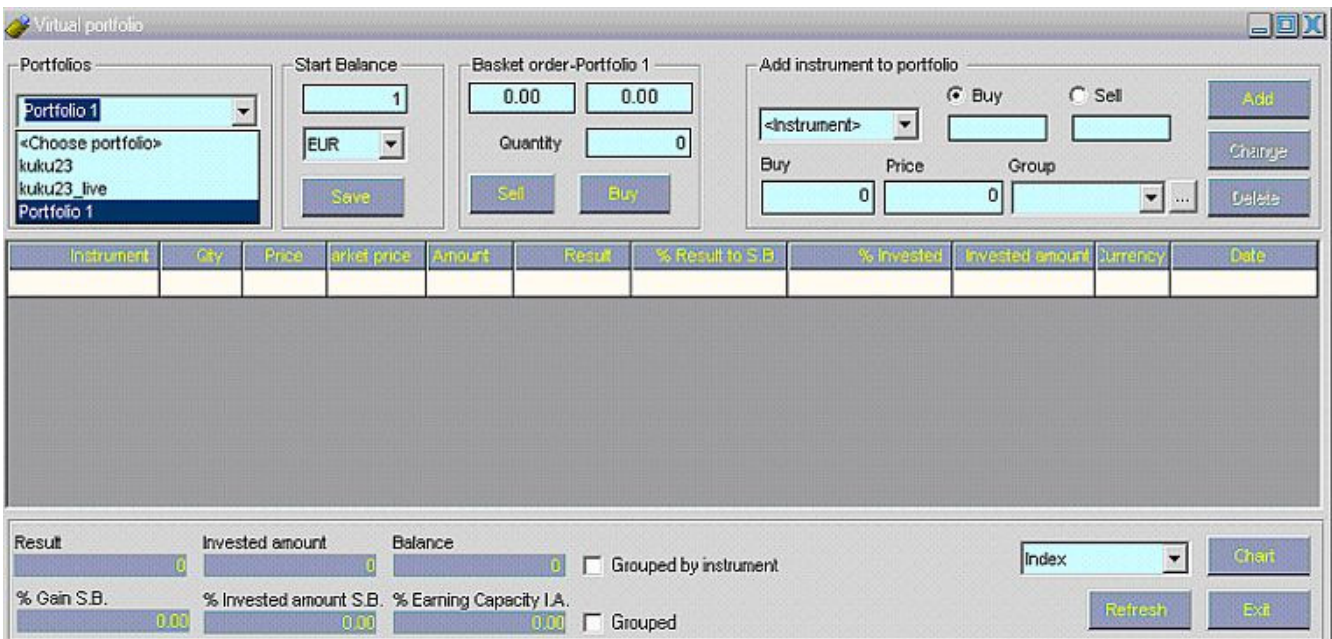
(Figure 2)

In order to start working with the module “Virtual Portfolio”, first you need to create one. In the “Virtual Portfolio” window, in the panel “Portfolios”, click the button “New”. The following window will open (Figure 3):



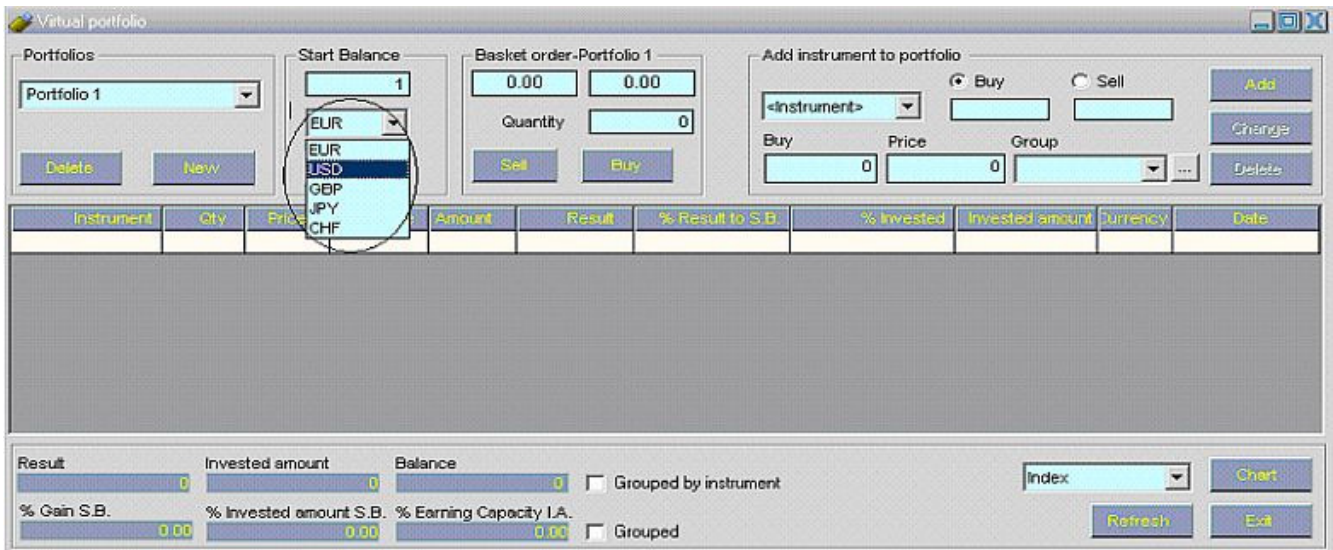
(Figure 3)

Enter the name of the new portfolio and click on the “OK” button to save it. To choose the already created portfolio, you need to open the drop-down menu in the “Choose portfolio” bar (Figure 4):



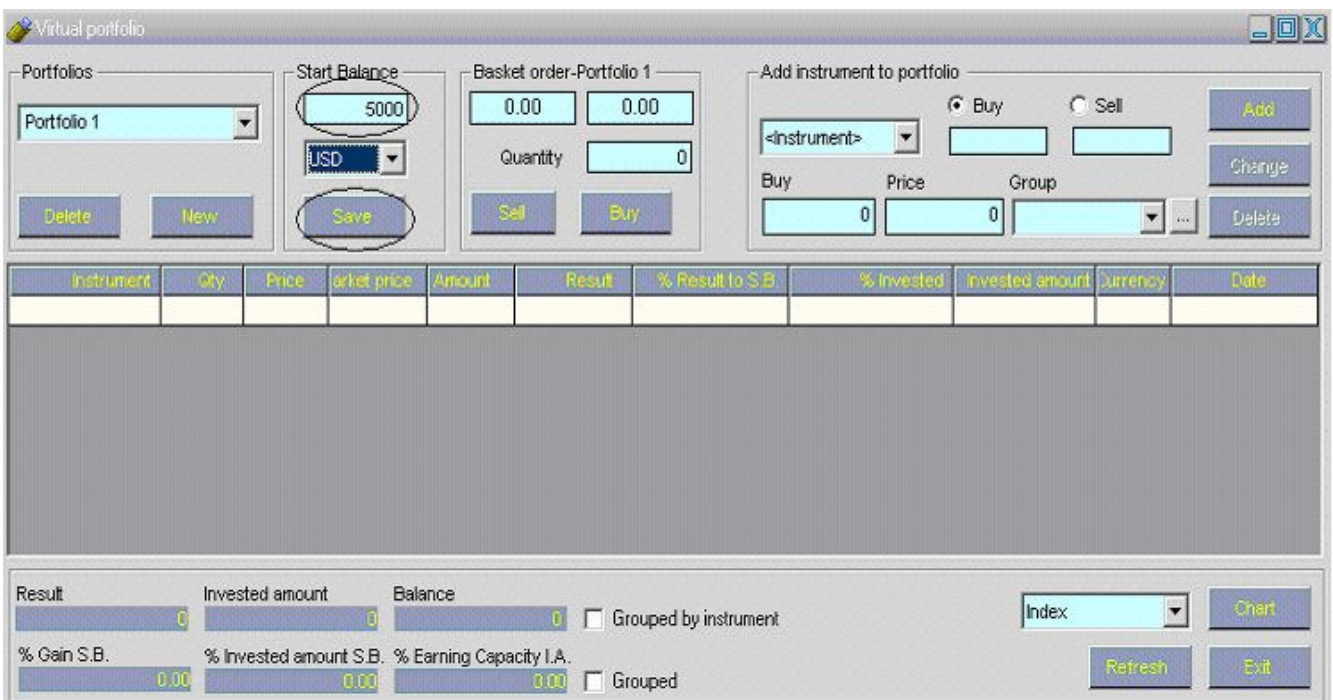
(Figure 4)

Choose the currency, which you would like to use as a base currency of your portfolio (Figure 5):



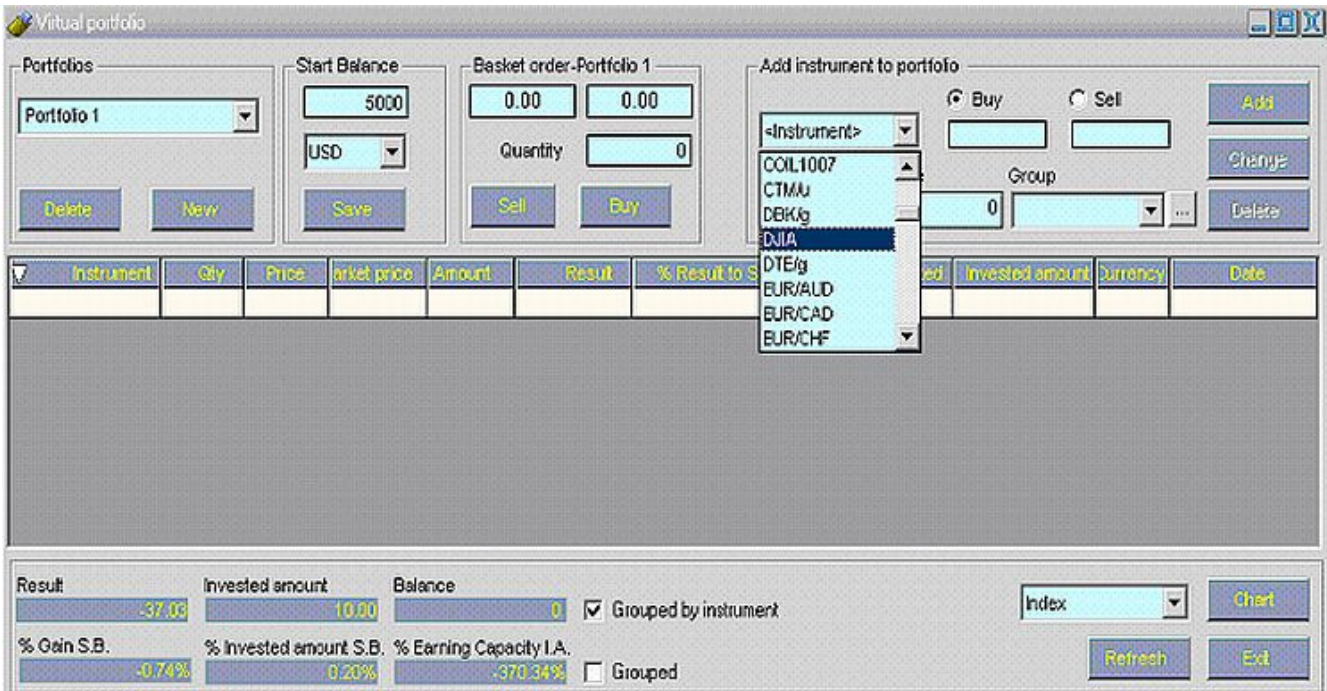
(Figure 5)

Enter the amount of the start balance and click on the “Save” button (Figure 6):



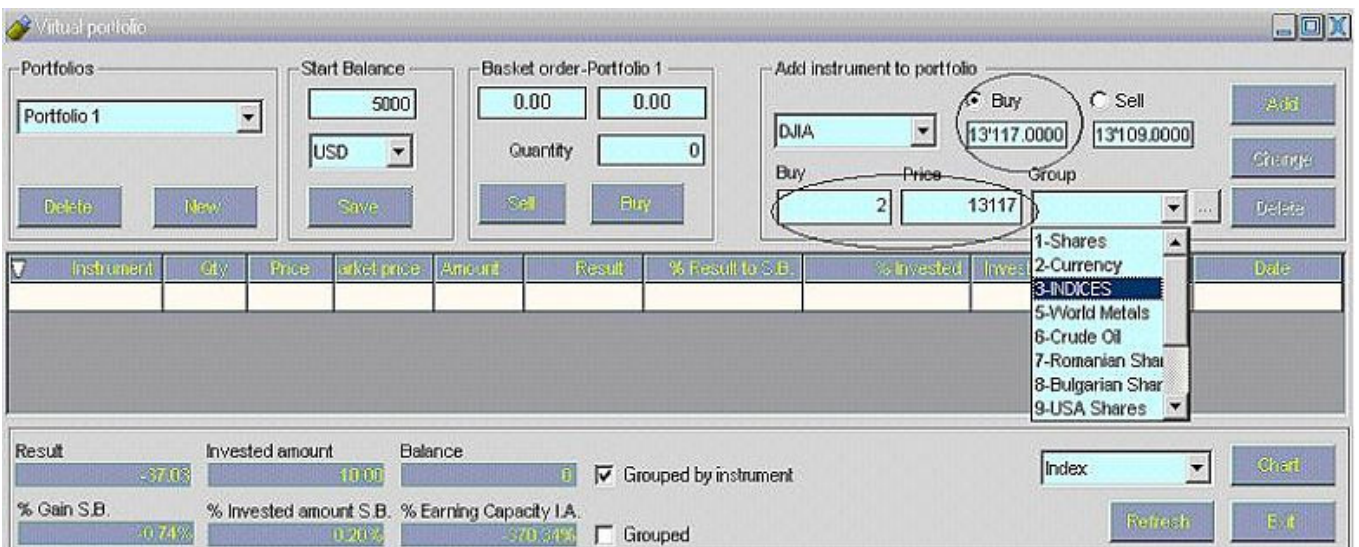
(Figure 6)

Choose the financial instrument that you would like to add to your portfolio from the drop-down menu “Instrument” (Figure 7):



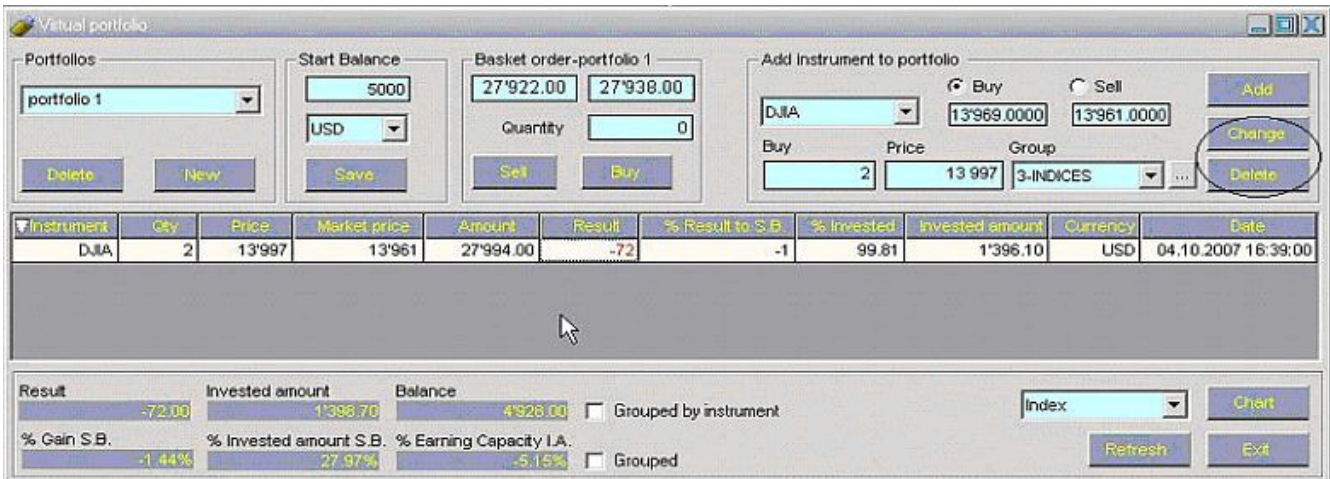
(Figure 7)

Select the operation you wish to perform (Buy or Sell). In the field "Buy", enter the quantity of the instrument you wish to buy and in the field "Price" enter the price of one unit of the respective instrument. You can also choose the group where you would like to insert the instrument. Click on the button "Add" and the trade will be added to the portfolio (Figure 8):



(Figure 8)

If you wish to change the parameters of the positions in your virtual portfolio, select the position, place your changes and click on the "Change" button. You can also delete the virtual trade by clicking on the "Delete" button (Figure 9):



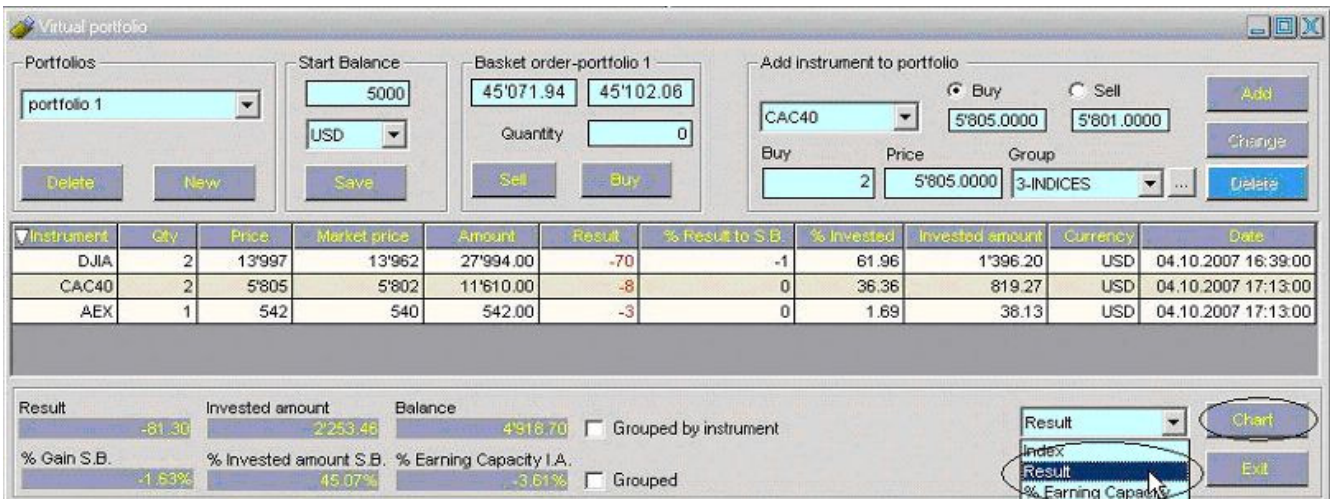
(Figure 9)

The module "Virtual Portfolio" gives you the opportunity to estimate your actual result from the positions, as you can open "Indices", "Result" or "% Earning Capacity" Charts.

The "Indices" Chart will show you the value of your "Basket order", which is equal to the value of your Portfolio. One special feature of this chart is that if due to short positions your Portfolio result is negative, the chart will show negative values.

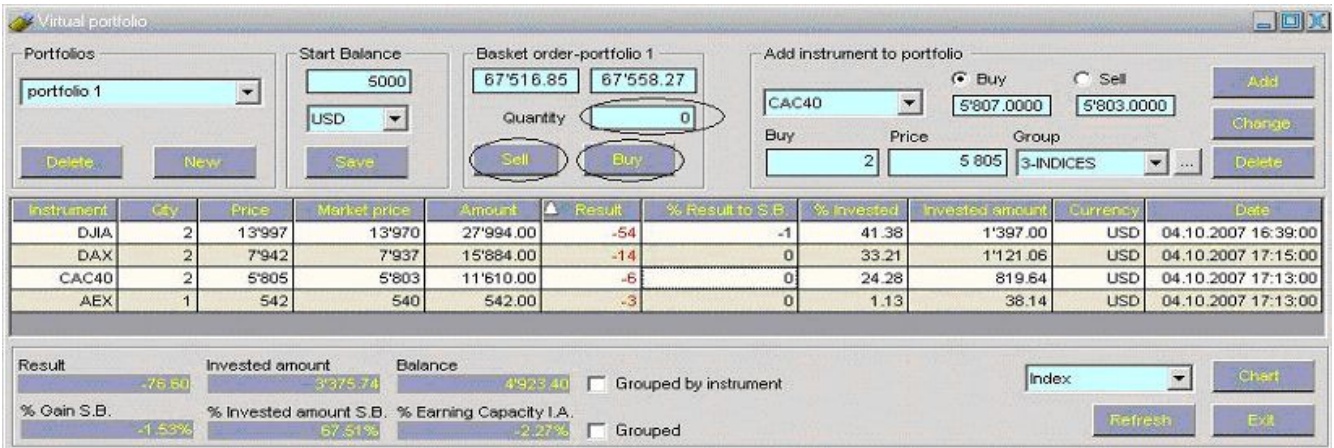
The "Result" Chart shows you the flux of the result from your open positions.

The last option, the "% Earning Capacity" Chart illustrates the percentage profitability on the amount of money invested in your Portfolio. The charts can be easily viewed by choosing the indicator from the drop-down menu and then clicking on the "Chart" button (Figure 10):



(Figure 10)

Once you open positions in your Portfolio, you will have the opportunity to place a "Basket order" of the Portfolio. The "Basket order" converts all the positions in your "Virtual Portfolio" into positions in your Real portfolio, where this conversion is executed through market orders for each instrument. To place a "Basket order" you need to enter the "Quantity" and chose the operation you would like to perform: "Buy" or "Sell". The quantity corresponds to the number of times you would like to buy or sell your portfolio. See (Figure 11):



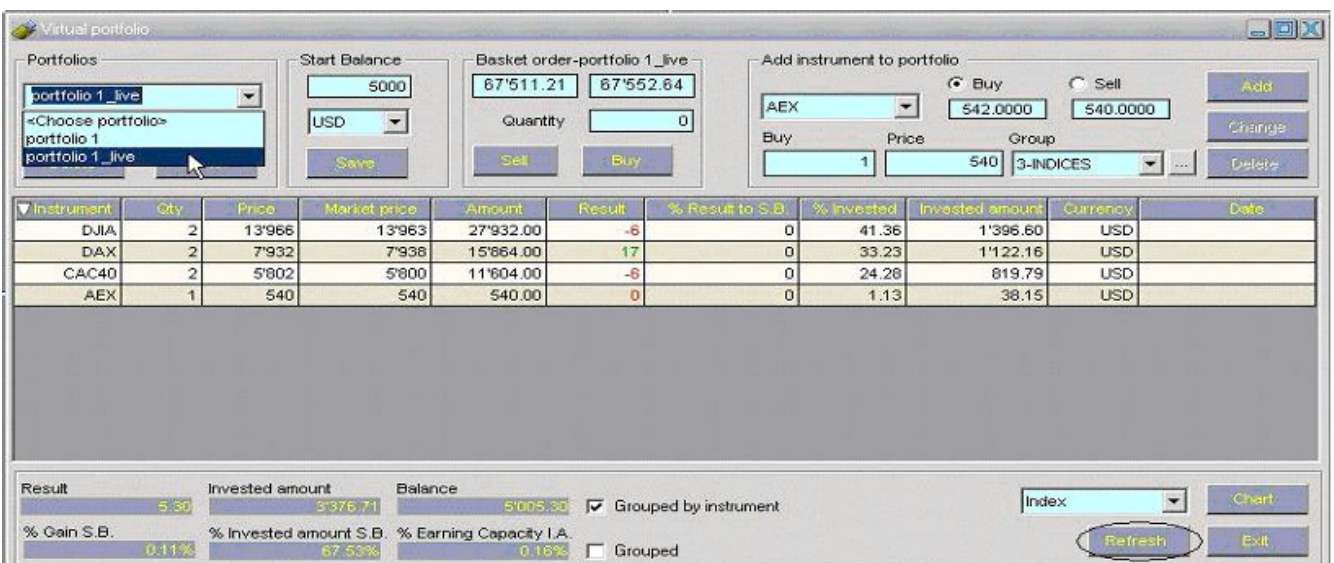
(Figure 11)

After clicking on the button for the operation you have chosen, you will see a confirmation window alerting you that you will be entering into live execution mode through market orders. If you click "OK" your orders will be sent for real live execution (Figure 12):



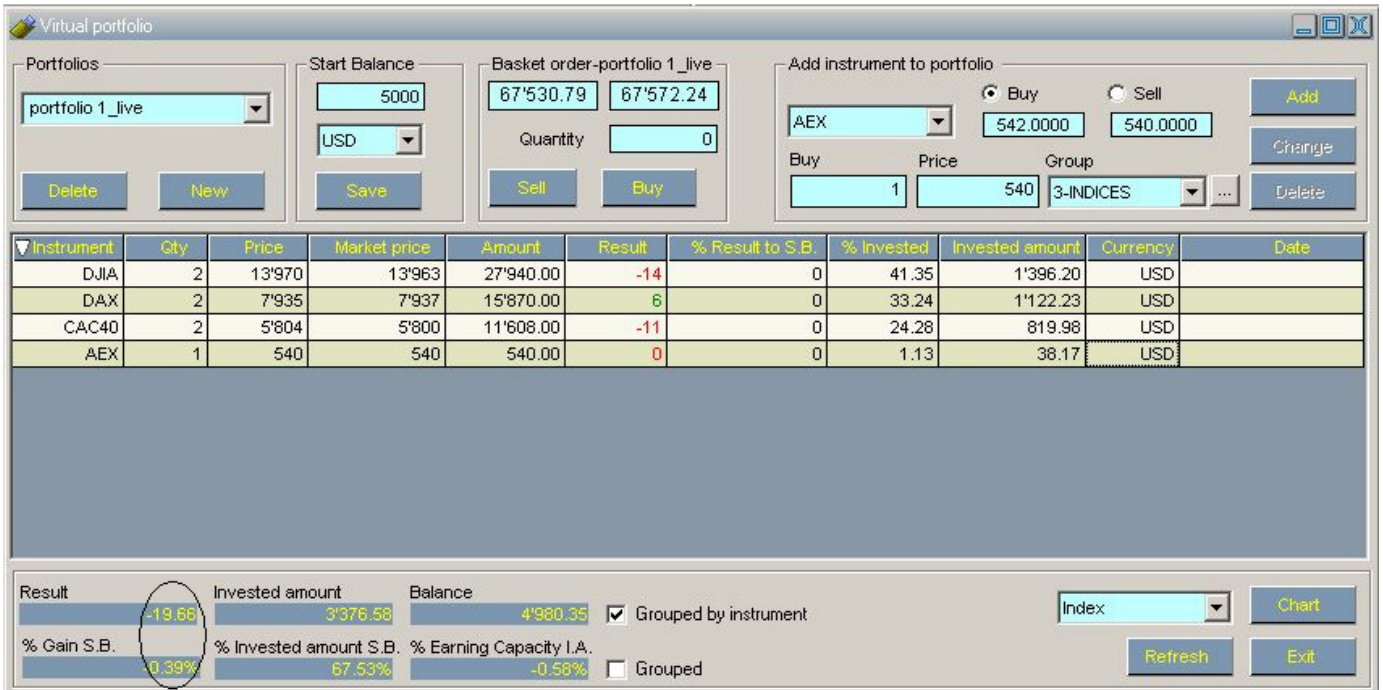
(Figure 12)

A second real portfolio (Portfolio1_live) will be created automatically after the execution of all the orders from the "Virtual Portfolio". You can load it up from the drop-down menu of "Portfolios" and click on the "Refresh" button as shown (Figure13). The positions of your new real portfolio can be seen in your common "Positions" window of your Delta Trading platform.



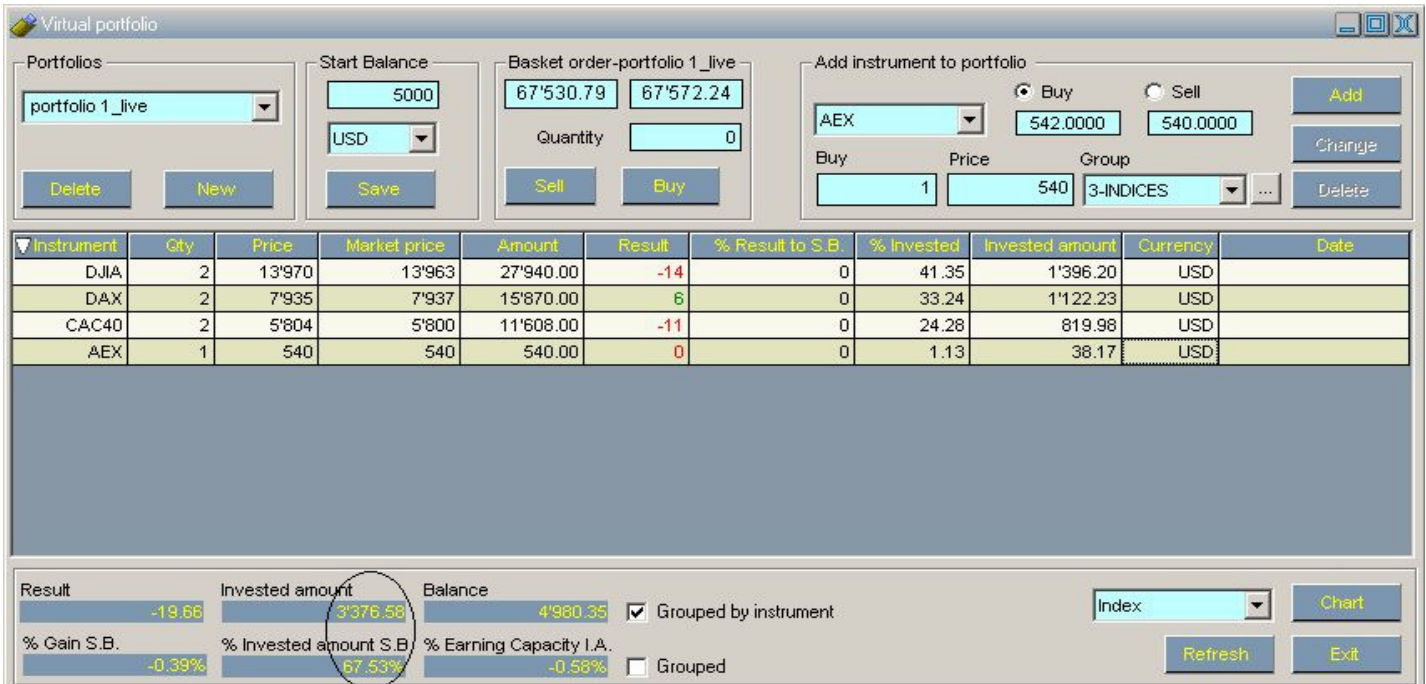
(Figure 13)

“% Gain S.B.” Shows the result of the positions in the Portfolio as a percent of the initial capital (Figure 14).



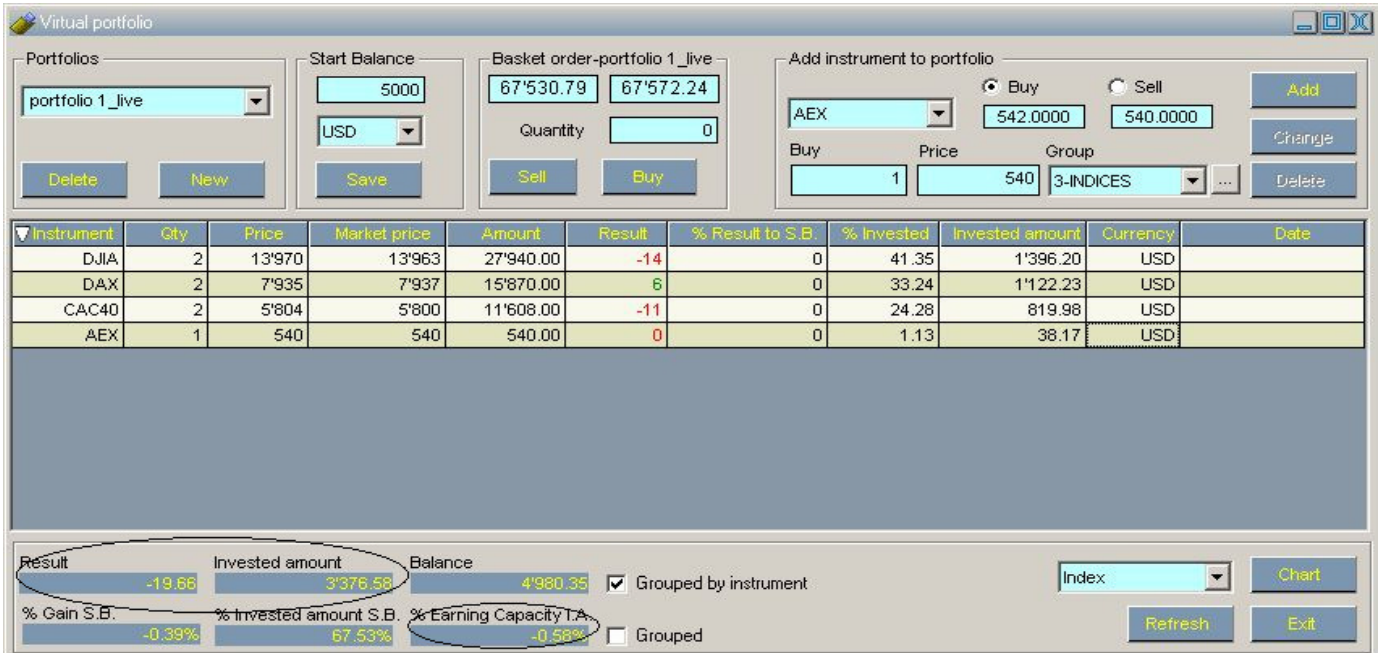
(Figure 14)

“% invested amount S.B.” Shows the invested sum for the positions in the Portfolio as a percent of the initial capital (Figure 15):



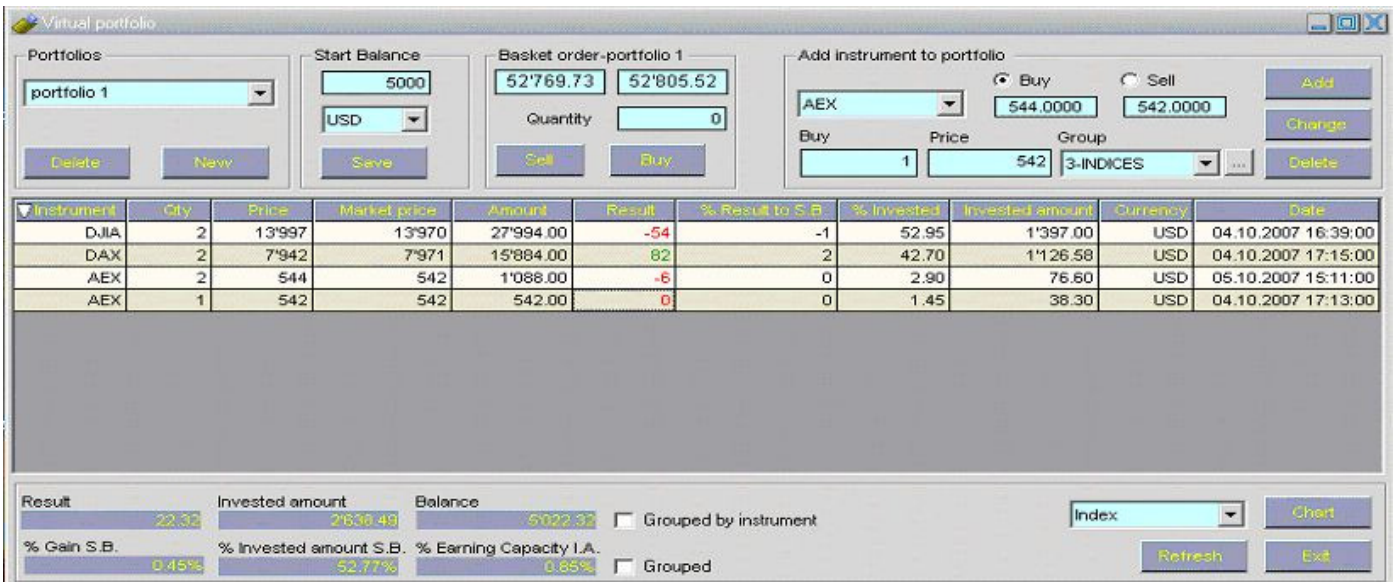
(Figure 15)

“% Earning Capacity I.A.” shows the result of the positions in the Portfolio as a percent of the invested sum for these positions (Figure 16):

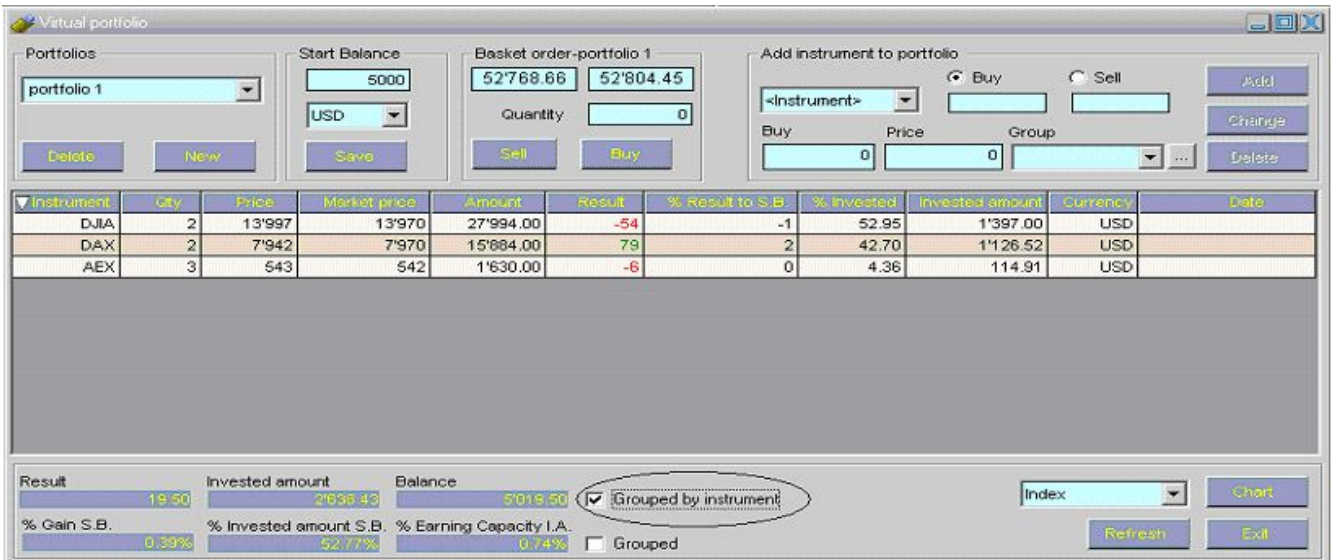


(Figure 16)

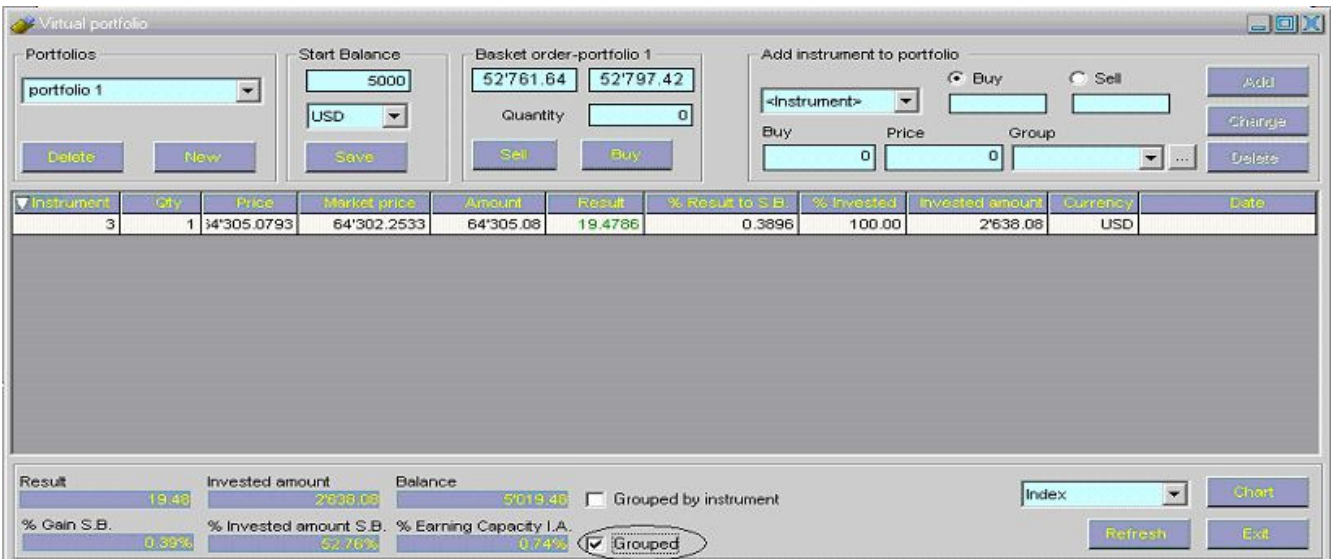
You can group your orders by instrument or by group as seen in the Figures bellow (Figure 17, 18, 19)



(Figure 17)



(Figure 18)



(Figure 19)